

Capacity Building for Research in Injury Prevention & Control

Shanthi Ameratunga, MBChB MPH PhD
Deputy Head - School of Population Health
Faculty of Medical & Health Sciences
University of Auckland, New Zealand

s.ameratunga@auckland.ac.nz

World Report: Recommendations

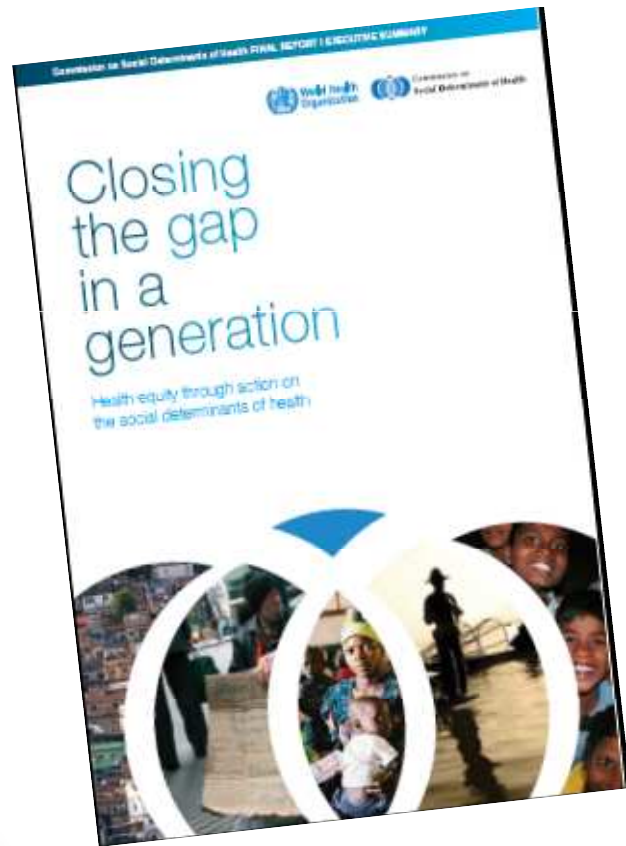
- Identify lead agency to guide national road safety efforts
- Assess problems, policies and institutions settings related to RTI and capacity for RTI prevention in each country
- Prepare national road safety strategy and plan of action
- Allocate financial and human resources to address problem
- Identify and implement specific actions to prevent RTIs and minimise consequences, and evaluate the impact of strategies

World Report: Recommendations

- **Identify** lead agency to **guide** national road safety efforts
- **Assess** problems, policies and institutions settings related to RTI and capacity for RTI prevention in each country
- **Prepare** national road safety strategy and plan of action
- **Allocate** financial and human resources to **address** problem
- **Identify and implement specific actions** to prevent RTIs and minimise consequences, and **evaluate the impact** of strategies

Support development of national capacity & international cooperation

Commission on Social Determinants of Health



Overarching Recommendations

1. Improve Daily Living Conditions
2. Tackle the Inequitable Distribution of Power, Money, and Resources
3. Measure and Understand the Problem and Assess the Impact of Action.

What's involved?

- The will, opportunity and skill base to act...
- Multi-pronged strategies - cooperation of many sectors
- Multi-disciplinary with a focus on 'low hanging fruit'
- Prioritising LMICs and vulnerable communities
- Respect for sound evidence and context
- Respect for relevant research & evaluation

- Time is of the essence

Ask me what is the greatest thing in the world: I will reply 'It is people, it is people, it is people' (Māori proverb)

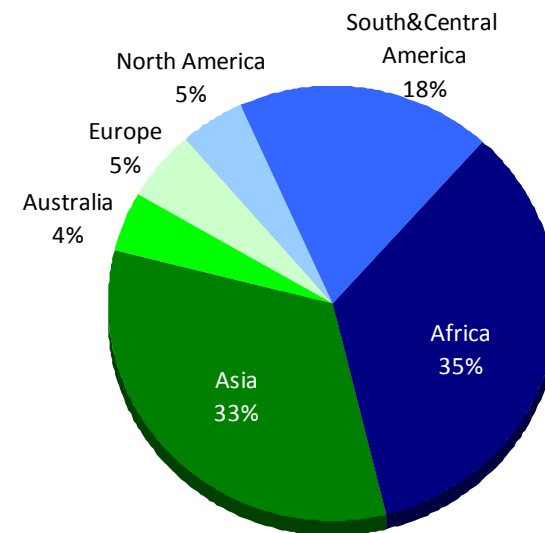
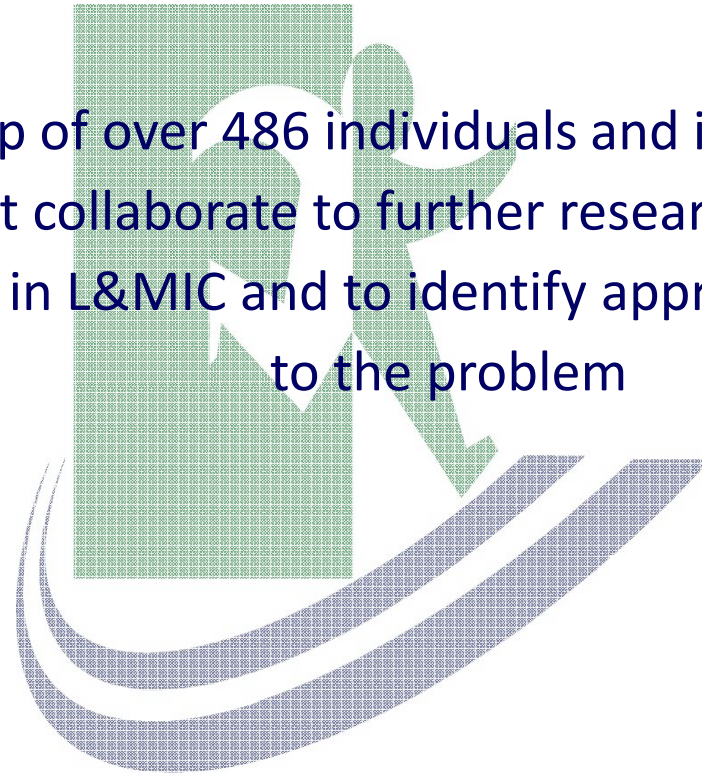
Inverse care law....

The availability of good medical [or social] care tends to vary inversely with the need for it in the population served.

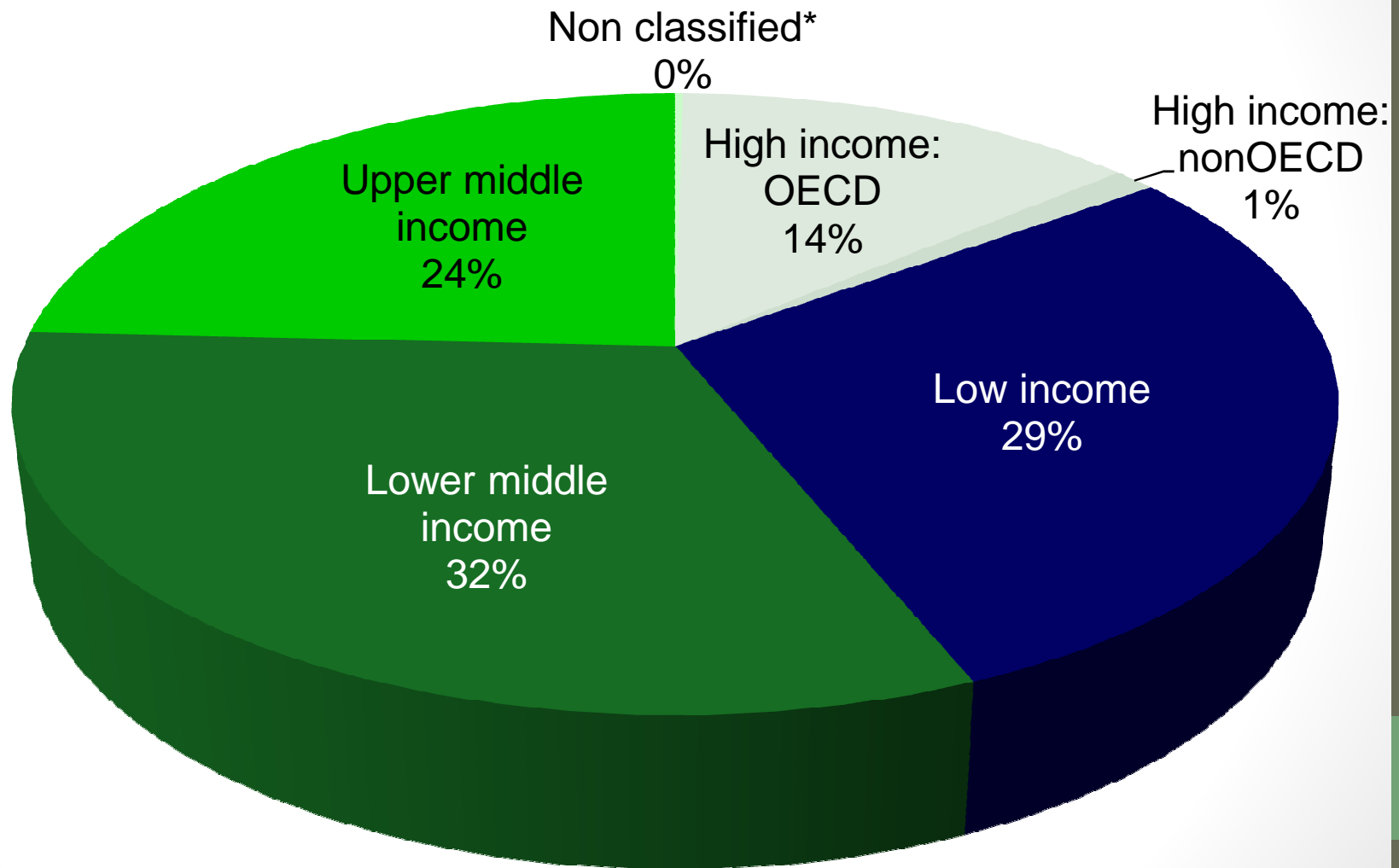
Julian Tudor Hart, Lancet:1971

Road Traffic Injury Research Network

A partnership of over 486 individuals and institutions - from 62 countries that collaborate to further research on the impact and causes of RTI in L&MIC and to identify appropriate interventions to the problem

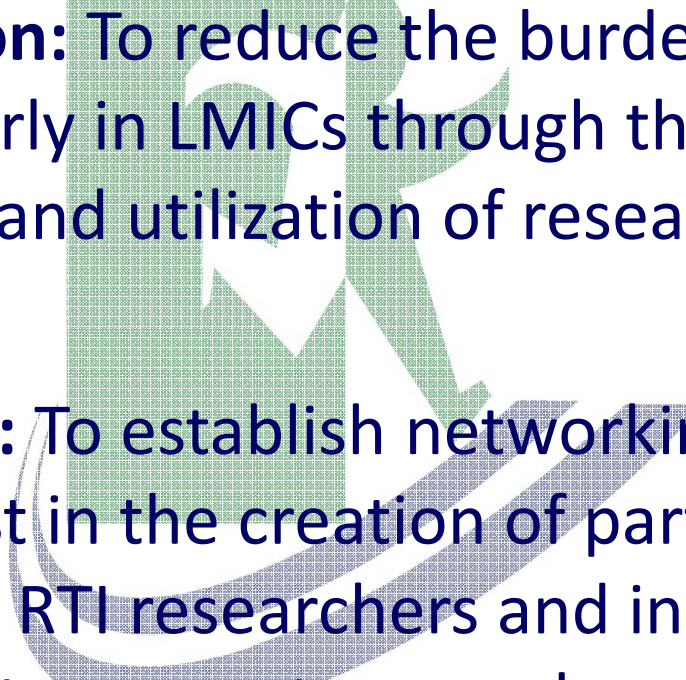


Partners by country's income level



*1 = Taiwan

Road Traffic Injuries Research Network

- **Our vision:** To reduce the burden of RTI, particularly in LMICs through the promotion, conduct and utilization of research
 - **Our goal:** To establish networking mechanisms and assist in the creation of partnerships between RTI researchers and institutions globally, to support research and research capacity in LMICs
- 

Specific objectives

- To **advocate for research** to reduce the burden of RTI in LMICs
- To **set priorities** for RTI research in LMICs
- To **help develop capacity** for RTI research in LMICs
- To **promote investments** for RTI research in LMICs
- To **facilitate communication between partners** involved in RTI research in LMICs
- To **conduct strategic research** on RTI in LMICs
- To **disseminate and promote the application and utilization of research** to reduce the burden of RTI in LMICs

Some mechanisms

- Supporting development of Junior and Senior researchers
- Multi country studies
- Scholarships for conference attendance
- Discussion fora, webinars
- Newsletters – multiple languages, topics
- Regional Workshops



Regional Workshops

- Aiming to equip local and national researchers with road safety knowledge, and to impart skills, Regional Workshops have been organized in Malaysia, Pakistan, Kenya, Ghana, Mexico, Indonesia....



Other options for capacity development: selected list

TEACH-VIP (WHO)

- Comprehensive injury prevention & control curriculum developed by global network of injury prevention experts, adapted to local settings
- 60 lessons / classroom and interactive options
- Now available as e-learning package



MENTOR-VIP (WHO)

- Exchange of experience between more skilled / experienced person and a person seeking to develop such skills.
- 12 month program, aims to be cost-neutral



Research Collaborations

- Fogarty International Collaborative Trauma & Injury Research Training Program – provides training across range of basic to applied science, epidemiology of risk factors, acute care and rehabilitation, and policy development
- Bloomberg / WHO initiative – 10 country study



The Pacific at Night

Injuries: a neglected public health issue

Among top 5 causes of death in most Pacific Island nations

Traffic-Related Injury in the Pacific (TRIP) Project

Wellcome Trust - Health Research Council of NZ
International Collaborative Research Grant



Major findings

- RTI risks:
 - Fatigue
 - Alcohol and kava
 - Seatbelt use
 - Vehicle and other factors
- Burns: gender and ethnic issues
- Child injuries: Neglected burden

Opportunities created

- IP Networks & trauma registers
 - injury surveillance profile to identify hazards
- Size of RTI problem
 - human and health cost
 - Population based priorities
- Training & capacity development
 - Postgraduate achievements (6 PG CertHealth, 3 MPH, 1 PhD... more)
 - MoH, LTA, clinical colleagues
 - Analytic and writing skills
- Moving forward

The Pacific at Night





Mahi rawa wā tātou, mahi te kore mahi tonu
Tawhiti rawa to tātou, haerenga te kore haere tonu

**We have done too much to not do more
We have come too far to not go further**

Acknowledgements

- RTIRN Board and Partners
- Colleagues and funders

Your thoughts, comments and suggestions?