



MOTORCYCLE INJURIES IN LOW AND MIDDLE INCOME COUNTRIES



EXPERIENCES WITHIN KISUMU MUNICIPALITY

PRESENTED AT STANLEY HOTEL
NAIROBI

BY: DR. ROSEMARY OBARA (MBChB, MPH)

23rd June 2009



PRESENTATION OUTLINE

- SITUATION
- EXTENT OF MOTORCYCLE CRASHES/ACCIDENTS AND INJURIES IN KISUMU (2008, 2009)
- CHALLENGES IN PREVENTION OF MOTORCYCLE INJURIES
- WHAT CAN THE MUNICIPALITY DO

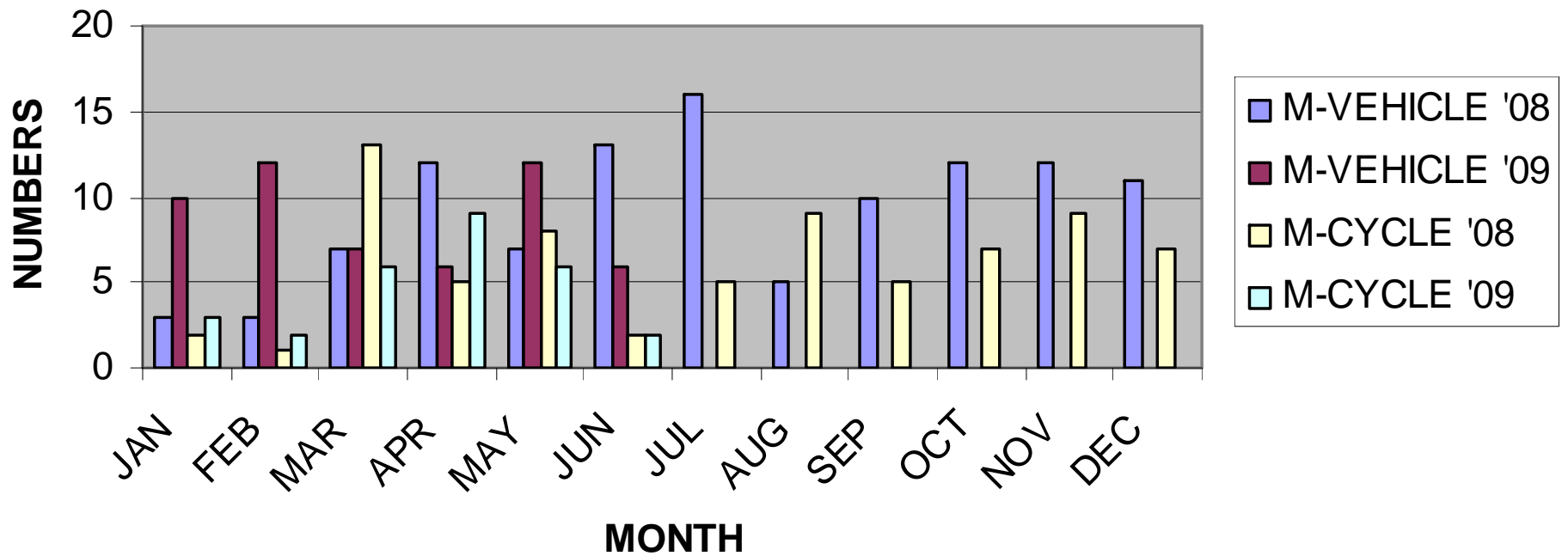




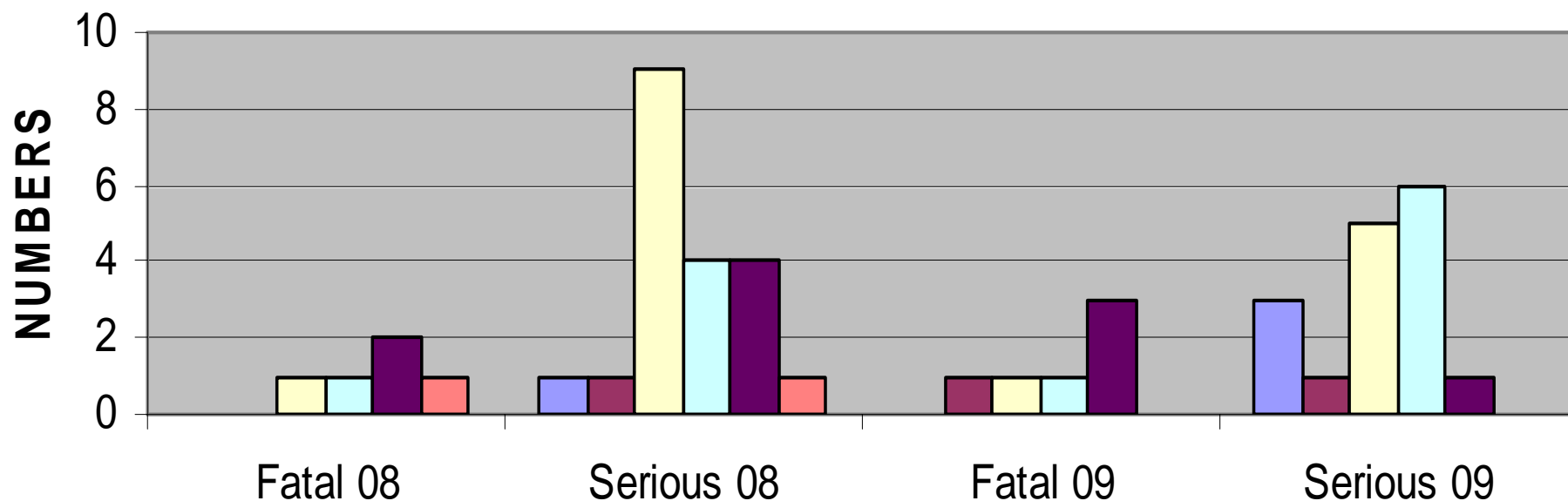




MOTOR-CYCLE VS MOTOR-VEHICLE INJURIES IN 2008 & 2009



SEVERITY OF MOTOR CYCLE INJURY BY MONTH OF THE YEAR



SEVERITY OF INJURY IN 2008 & 2009

JAN

FEB

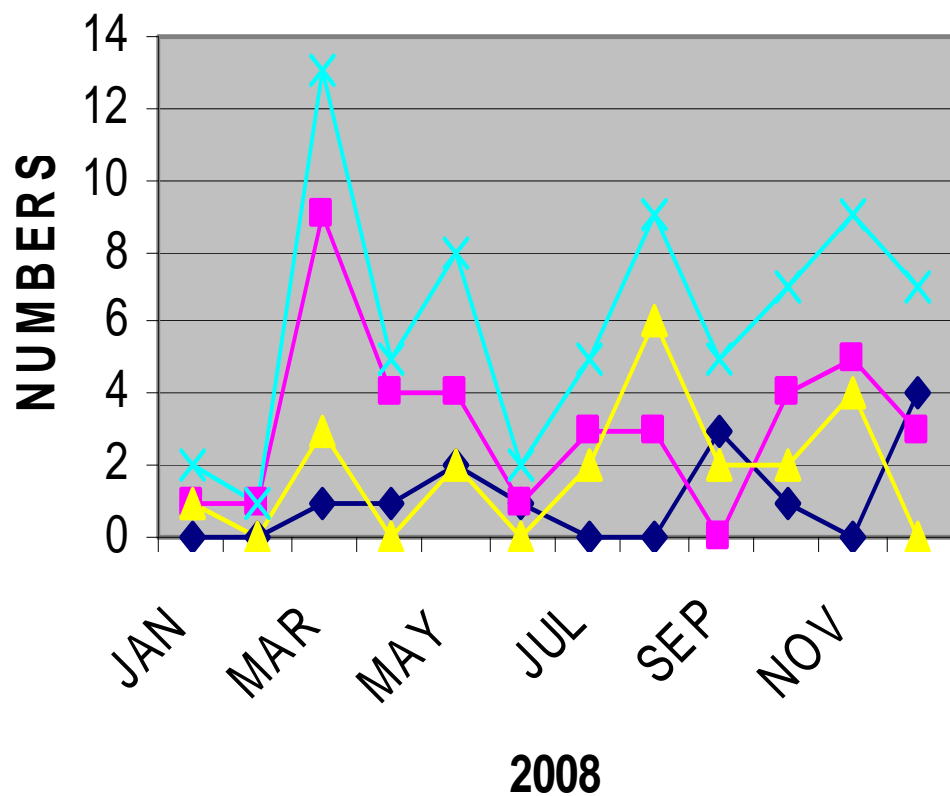
MAR

APR

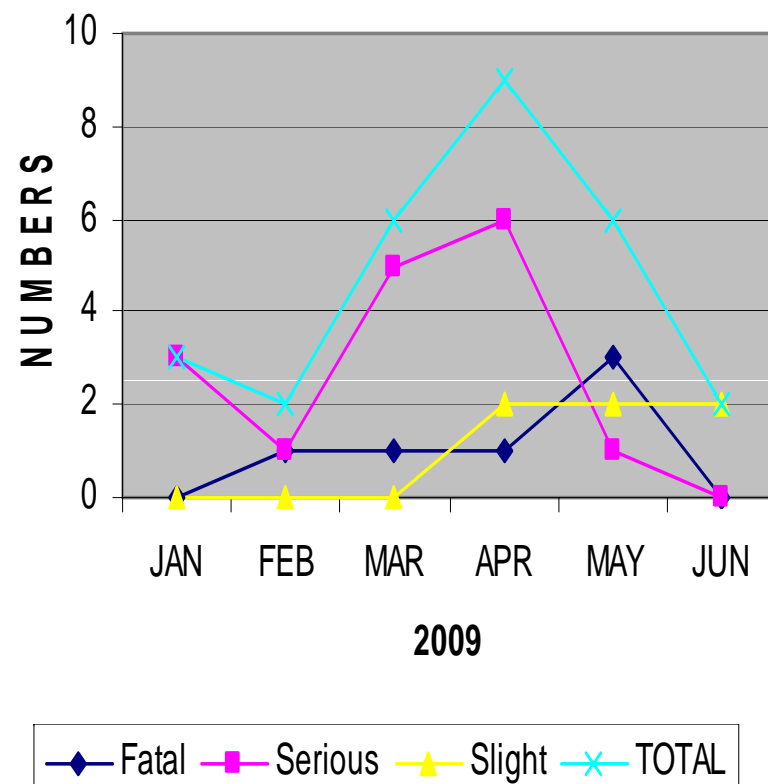
MAY

JUN

MOTOR CYCLE INJURIES IN KISUMU



◆ Fatal
 ▲ Slight
 ■ Serious
 × TOTAL



◆ Fatal
 ▲ Slight
 ■ Serious
 × TOTAL



CHALLENGES IN PREVENTION OF MOTORCYCLE INJURIES

THE RISK FACTORS INCREASING ACCIDENT PRONNESS

- Congested Roads – Buses, Matatus, Lorries, Cars, Tuk Tuks, Bicycles, handcarts, pedestrians all together.
- Poor road maintenance – pot holes, bumpy or muddy roads
- Lack of knowledge on road safety. Untrained Motor-cyclists (Graduation from Boda Boda)
- Drunkenness and poor judgment
- Lack of protective gear (helmets are unpopular due to costs and uncomfortable weather)



CHALLENGES IN PREVENTION OF MOTORCYCLE INJURIES Contd.

- Attractiveness of the industry hence the large numbers of M-Cyclists
- LEGISLATURE
 - Unregistered Motor Cycles
 - Stolen/ PEV looted motorcycles
 - Licensing is a requirement but most do not have licenses
 - Council By-Laws not yet implemented
 - Enforcement of laws by police is difficult
 - Political Interference



What the Municipality can do

- Improve Local regulations
- Improve Urban planning
- Deliberately focus on safety in road works and on streets use
- Give Economic incentives to compliant citizens
- Implement poverty reduction programmes



○ Strategies

- Inter-sectoral collaboration
- Enforcement of laws on helmets, reflectors, etc
- Inform and educate
- Communicate, risk line
- Measure and evaluate
- Conduct Research, & Establish data base



END
THANK YOU